

Yäku: _____

Walu: _____

Dhunupayan dhäwu djäma wanha näyi ga nurruyirr'yun ga dhä-dhawar'yun dhäwu.



"Bäyñu."

"Way wurrañ' nhänal muka nhe narraku yothunhany?"

Bala näyi näñdi'mirriñuny weti' mel-larrañal näyi nhanukalanaw yothuwnydja.

Marrtjin näyi ga wanän wurrañ'nha,

Ga näyi wurrañ'tja wanän bitjarr,

Yäku: _____

Walu: _____

(Answers to paste onto or to check against. Extension activity: students could add extra sentence strips to fill in more detail)

Bala ngayi nändi'mirriṅuny weṭi' mel-larruṅal ngayi nhanukalanaw yothuwnydja.

Marrtjin ngayi ga waṅan wurrpaṅ'nha,

"Way wurrpaṅ' nhäṅal muka nhe ṅarraku yothunhany?"

Ga ngayi wurrpaṅ'tja waṅan bitjarr,

"Bäyṅu."

Yäku: _____

Walu: _____

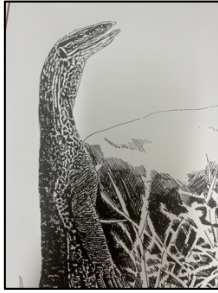
Raki' warryurr wuñuli' ñur yäkulil, wanha wuñuli' ga yäku ga rrambanjiyirr.



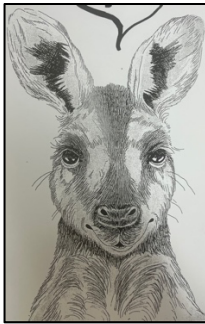
guñalun



ñändi'mirriñu
wet̪i'



gatala



djanda



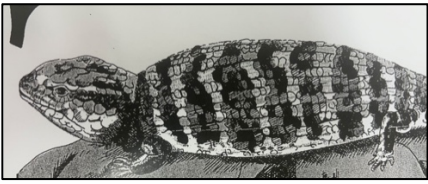
wurrpan'

Yäku: _____

Walu: _____

Wukirri dhunupa yäku wuṅuḷi'lii.









Yäku: _____

Walu: _____

Dhunupayan̄ dhäwu djäma wanha ga nurruyirr'yun, ga dhä-dhawar'yun dhäwu.

| | | | | | |
|--|--|--|--|--|--|
| | | | | | |
|--|--|--|--|--|--|

Nhepi dhäwu wukirri:

Maḷḷ'maran̄ djäma nhuṅu Page 8/9-ḷur djorra'ḷur.



| | | | | | |
|--------------|--------|------|----------|----|----------|
| wurrpan̄'tja | wan̄an | ḷayi | bitjarr, | Ga | "Bäyḷu." |
|--------------|--------|------|----------|----|----------|

Yäku: _____

Walu: _____

Dhunupayan dhäwu djäma wanha ga nurruyirr'yun, ga dhä-dhawar'yun dhäwu.

| | | | | |
|--|--|--|--|--|
| | | | | |
| | | | | |

Nhepi dhäwu wukirri:

Maḷḷ'maranḷ djäma nhuḷu Page 4-ḷur dḷorra'ḷur.

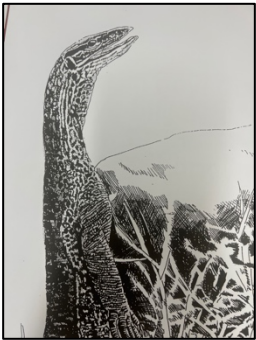
| | | | | |
|--|---------------|--------|---------|--------|
|  baman' | ga | gan | yothu | Näthil |
| weṭi' | ḷändi'mirriḷu | nhinan | weṭi'. | |

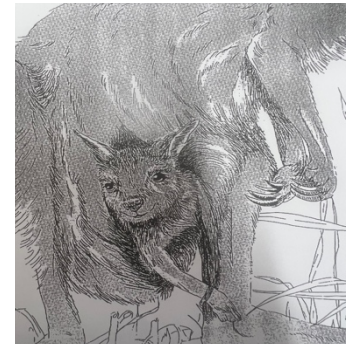
Yäku: _____

Walu: _____

Wukirri winya'yunawuy yäku mala.

wurrpan' djanda yothu weti'







Yäku: _____

Walu: _____

Wukirri winya'yunawuy yäku mala.

wanan mel-larruṅal wurrpaṅ' ṅāṅdi'mirriṅu yothu

Bala ṅayi _____ weti'
_____ nhanukalaṅaw
yothuwnytja.

Marrtjin ṅayi ga _____
_____ nha,

"Way wurrpaṅ' nhāṅal muka nhe
ṅarraku _____ nhany?"

Yäku: _____

Walu: _____

Wukirri winya'yunawuy yäku mala.

djandany

Ga

nhanṅu

Bäyṅu

_____ ṅayi _____ wanṅan _____

bitjarr,

"_____." Bitjarr.

Yäku: _____

Walu: _____

Wukirri winya'yunawuy yäku mala.

ḡanya ḡarraku ḡayi Wanha gatala balan
Benḡuryiny nhanḡu

_____ ḡayi nhänḡal _____ nhan ga waḡan
ḡayi _____ bitjarr,
" _____ nhe nhänha _____
yothuny?"
ḡayi bitjarra _____ waḡan gatalany.

Yäku: _____

Walu: _____

Wukirri winya'yunawuy yäku mala.

djinawa Ne mathirraṅur ṅorra

" _____ "

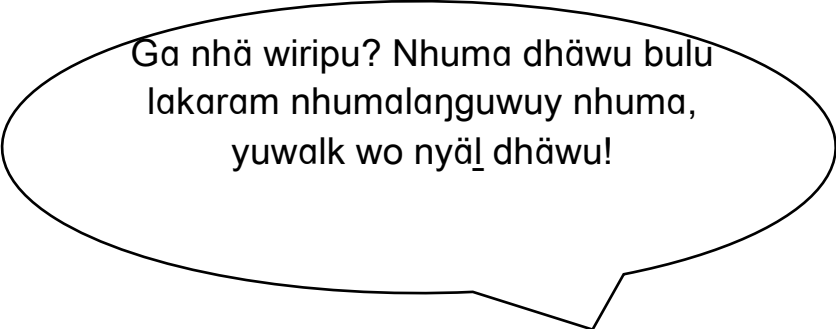
"Ṇunha ṅayi _____ ga _____
ṅarrakal".

Yäku: _____

Walu: _____

Yuwalk wo nyäl?

- | | | |
|--|--------|------|
| 1. Gatala yothu wetiw' nändi'mirriṅu. | Yuwalk | Nyäl |
| 2. Yothu weti' ga ṅorra mathirraṅur. | Yuwalk | Nyäl |
| 3. Djanday yothuny wetiny' djawyurr. | Yuwalk | Nyäl |
| 4. Guṅaluṅ yaka marṅgi wanha yothu weti'. | Yuwalk | Nyäl |
| 5. Wurrpaṅ'thu bäyṅu nhäṅal yothuny wetiny'. | Yuwalk | Nyäl |



Ga nhä wiripu? Nhuma dhäwu bulu
lakaram nhumalaṅguwuy nhuma,
yuwalk wo nyäl dhäwu!

Dhunupany wanha yäku, mala-djarryurnydja nhepin.

1. **Nhälil yothu weti' winya'yurr?**
 - wukirrilil
 - ranjilil
 - mathirralil
 - wänjalil

2. **Nhä lika nändi'mirrinuy ga yothuy wetiy' luka?**
 - hot chips
 - mulmu
 - läli
 - gapu

3. **Nändi'mirriṅu weti' yolnha ṅurruṅuny waṅan?**
 - yothu weti'
 - waṭuny
 - bäruny
 - wurraṅ'nha

4. **Yolthu lakaraṅgal wanhal gan yothu weti' nhina?**
 - guṅaluṅdhu
 - bäruy
 - gaṭalay
 - djanday

5. **Nhälil maṅḍa marrtjin beṅuriny?**
 - lup-luplil
 - wänjalil
 - do'lil
 - ḍiltjilil

Yäku: _____

Walu: _____

Li_w'maran̄ ba_datjtjunawuy yäku mala

wan̄ganymiriy waluyy n̄äyi gan wawnu mulmu nyan̄'thurr
n̄än̄di'mirriṇuydja we_diy' Bala naye yothuny we_ti bälän bitjarr
marrtjin, bala winya yurra

Wukirri dhunupa yäku mala:

Ma_ln̄'maran̄ djäma nhuṇu Page 4-ṇur djorra'ṇur.

Yäku: _____

Walu: _____

Ḳiw'maraᅇ baᅇatjtjunawuy yäku mala

Marrtjin. ᅇayi guᅇaluᅇ"kal ga waᅇaan nanya bitjarr,
"Buw nhäᅇal muka nhe ᅇarrakku yoth'nhany?"
ᅇayee guᅇaluᅇ'tja waᅇan nhanaᅇu bitharr,
"Bäiᅇu".

Wukirri dhunupa yäku mala:

Maᅇᅇ'maraᅇ djäma nᅇuᅇ Page 13-ᅇur djorra'ᅇur.

Yäku: _____

Walu: _____

Ḳiw'maraṅ baḍatjtjunawuy yäku mala

Marraṅal ṅayi ṅanya, bahla manda marritjinan roṅṅiyinan wänalila.

Wukirri dhunupa yäku mala:

Maḷṅ'maraṅ djäma nhuṅu Page 18-ṅur djorra'ṅur.

Yäku: _____

Walu: _____

Ḳiw'maraᅇ baᅇatjtjunawuy yäku mala 0

Nadhil baman' gan nhenan ᅇänᅇimiriᅇu weᅇi' ga yothu wetii.
Rrambaᅇi mäᅇᅇa ᅇula ganha marrtjinya mulmu nyaᅇ'thunaraw.

Wukirri dhunupa yäku mala:

Maᅇ'maraᅇ djäma nhuᅇu Page 4-ᅇur djorra'ᅇur.