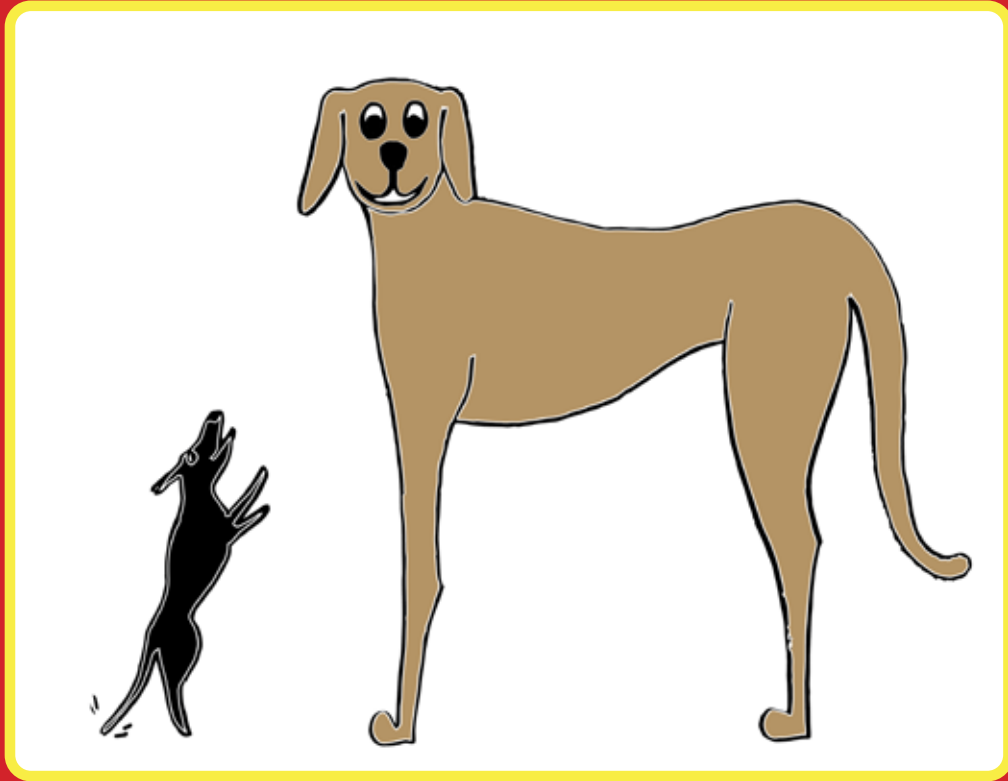
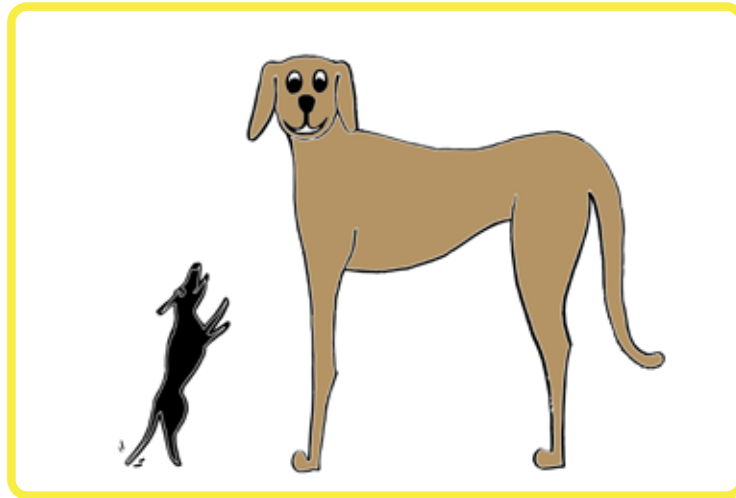


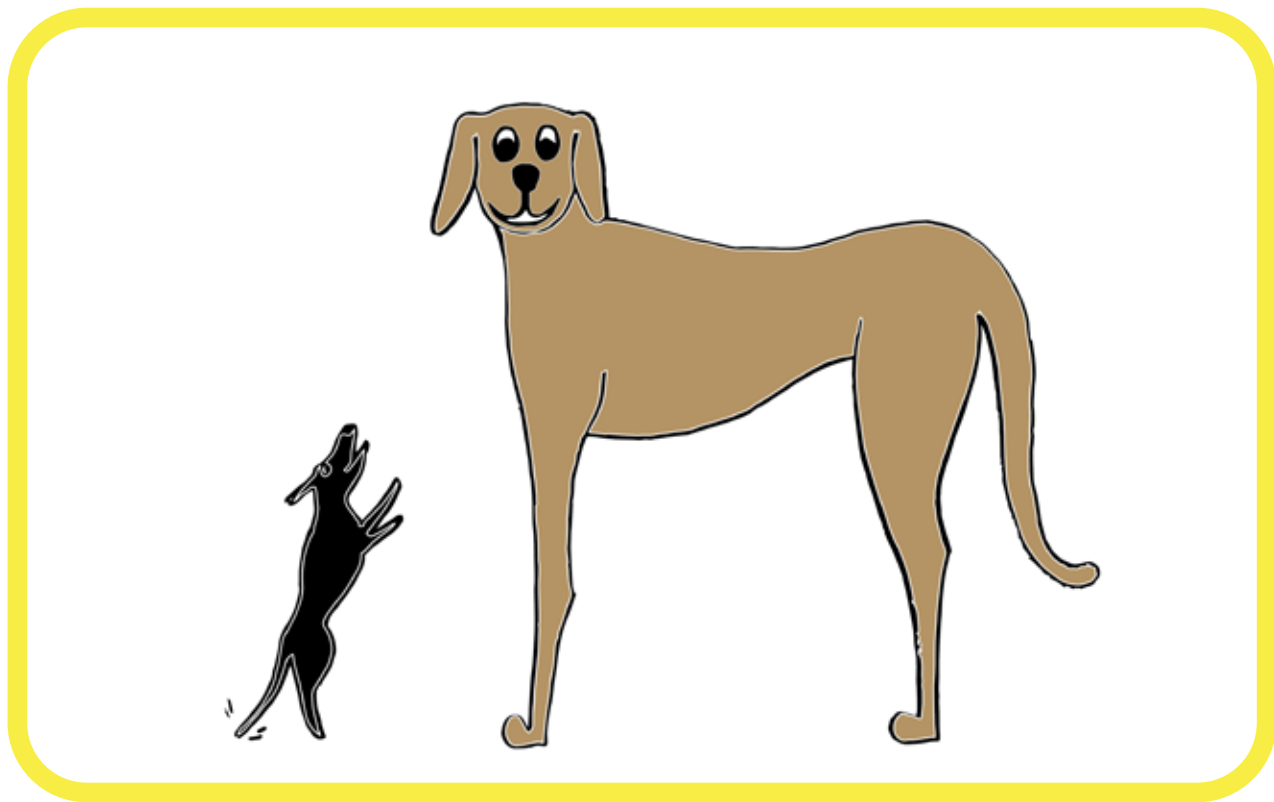
Wiyin' Watu



Wiyin' Watu



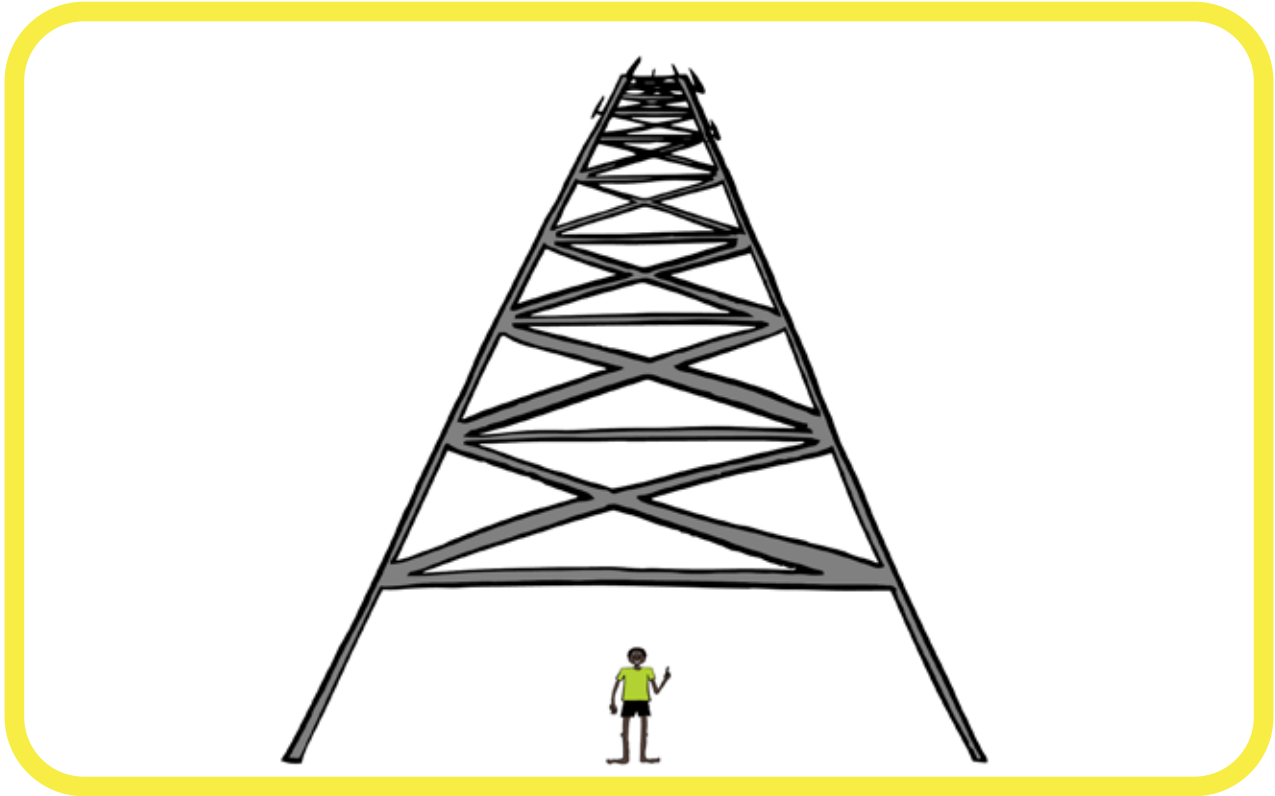
Dhuwal wiyin'
watu.



Dhuwal wiyin'
dhukarr.



Dhuwal wiyin'
djimuku.



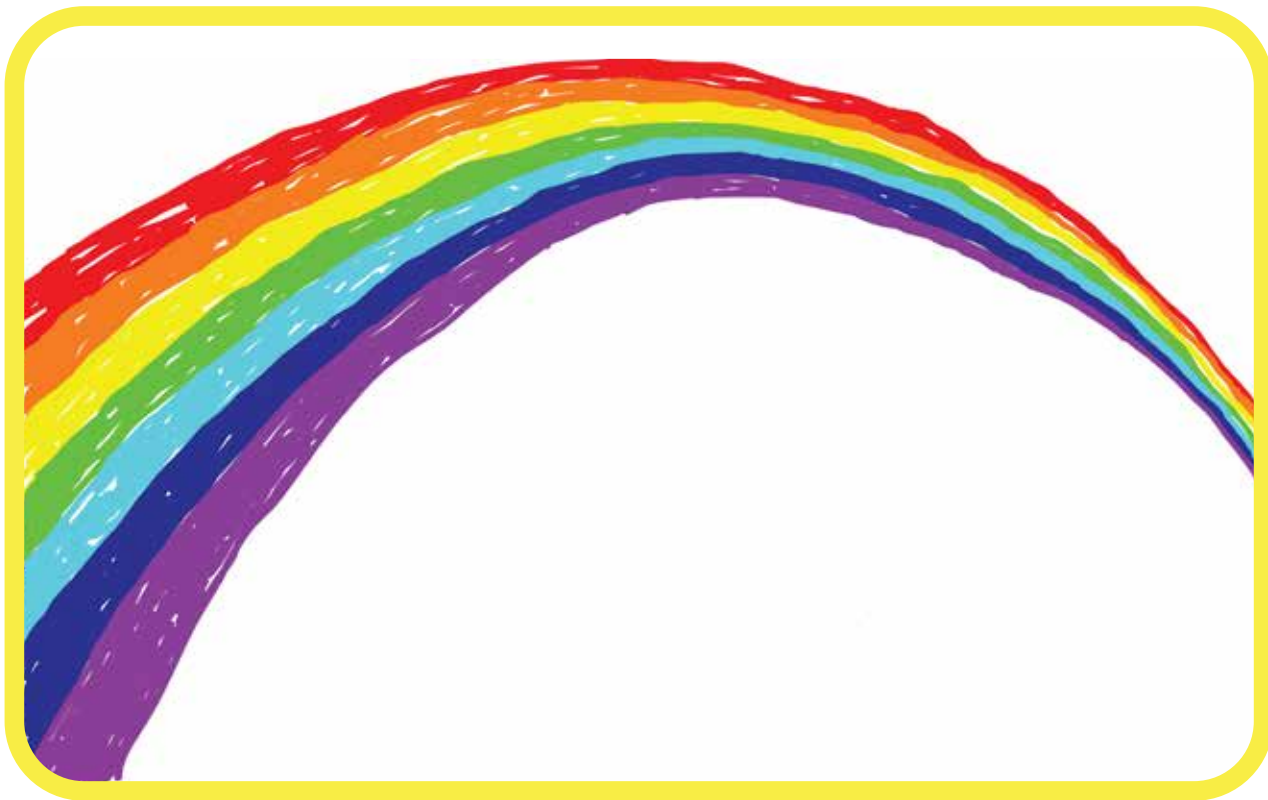
Dhuwal wiyin'
mayan.



Dhuwal wiyin'
binbarr.



Dhuwal wiyin'
djäri.



Dhuwal wiyin'
biyapiya.



Wiyin' Watu

(The) Tall Dog

2. Dhuwal wiyin' watu.
This is a tall dog.
4. Dhuwal wiyin' dhukarr.
This is a long road.
6. Dhuwal wiyin' djimuku.
This is a tall tower.
8. Dhuwal wiyin' mayan̄.
This is a long river.

10. Dhuwal wiyin' binbarr.
This is a long feather.

12. Dhuwal wiyin' djäri.
This is a long rainbow.

14. Dhuwal wiyin' biyapiya.
This is a long turtle intestine.

Wiyin' Waṯu
(The) *Tall Dog*

Language: Djambarrpuyŋu

Story by Nathan Holt
Illustrations by Nathan Holt

First published in 2015 as a Level 1 reader.
Revised and reprinted in 2022 as a supplementary reader.

All rights reserved. No part of this publication may be reproduced, stored in a retrieval system, or transmitted in any form or by any means, electronic, mechanical, photocopy, recording or otherwise without the written permission of the publisher.

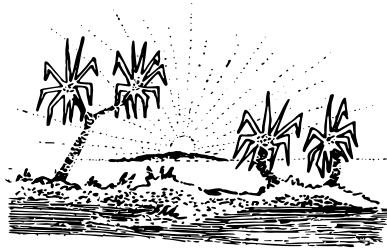
Published by Literature Production Centre – Shepherdson College..
Galiwin'ku, Arnhem Land, Northern Territory, Australia

Shepherdson College, PMB 74, Winnellie, NT 0822
www.lpc.elcho.org

ISBN



Shepherdson College



CELEBRATING 40 YEARS OF LITERATURE PRODUCTION
ELCHO ISLAND