

Yäku: _____

Walu: _____

Dhunupayanḡ dhäwu djäma wanha ḡayi ga ḡurruyirr'yun ga dhä-dhawar'yun dhäwu.



Ga bulu walal djatthurr ḡurrkun' wiyi'-wiyin dharpa mälakmaranharaw.

Ga gulkthurrnydja walal dharpany goḡ-waḡany ga waḡany bäythinyawuy.

Djäma walal ḡunhiyi ḡoḡuny dhawar'maraḡal ḡinygun.

Ga wiripuny walal yolḡu'-yulḡu marrtjin bala djatthunaraw wiyi'-wiyingu dharpaw mala.

Bala walal nhirrupa'-nhirrupara ḡunhi dharpany mala.

Ga ḡinygun dhuwal. Bala walal dhathar'yurra balan yuḡalila wäḡalil.

Ga beḡuryiny walal gondhaḡal ḡäkun mala bala ḡäḡal wäḡalila.

Wiripuny, yolḡu walal gan nhina-nhinan wäḡaḡur.

Bala walal ḡarḡan mala yaw'yurr ḡurikiyin dharpawna mala.

Yäku: _____

Walu: _____

(answers to paste onto or to check against)

Wiripuny, yolŋu walal gan nhina-nhinan wänŋaŋur.

Ga wiripuny walal yolŋu'-yulŋu marrtjin bala djatthunaraw wiyi'-wiyingu dharpaw mala.

Ga gulthurrnydja walal dharpany goŋ-waŋgany ga waŋgany bäythinyawuy.

Ga bulu walal djatthurr ḷurrkun' wiyi'-wiyin dharpa mälakmaranharaw.

Bala walal ŋarŋgan mala yaw'yurr ŋurikiyin dharpawuha mala.

Bala walal nhirra'-nhirrapara ŋunhi dharpany mala.

Ga beŋuryiny walal gondhaŋal ḅäkun mala bala gänŋal wänŋalila.

Djäma walal ŋunhiyi ḷoḷuny dhawar'maraŋal ḷinygun.

Ga ḷinygun dhuwal. Bala walal dhathar'yurra balan yuḷalila wänŋalil.

Yäku: _____

Walu: _____

Dhunupayanḡ dhäwu djäma wanha ḡayi ga ḡurruyirr'yun ga dhä-dhawar'yun dhäwu.

yolḡu

gan

Nhepi dhäwu wukirri:

Maḡḡ'maraḡ djäma nhuḡu Page 1-ḡur djorra'ḡur.



walal

Wiripuny,

wäḡaḡur.

nhina-
nhinan

gan

yolḡu

Yäku: _____

Walu: _____

Dhunupayanḡ dhäwu djäma wanha ḡayi ga ḡurruyirr'yun ga dhä-dhawar'yun dhäwu.

	wiripuny			
bala			dharpaw	

Nhepi dhäwu wukirri:

Maḡḡ'maraḡ djäma nhuḡu Page 2-ḡur djorra'ḡur.



wiripuny	marrtjin	Ga	wiyi'-wiyingu	walal
djatthunaraw	yolḡu'-yulḡu	mala.	bala	dharpaw

Yäku: _____

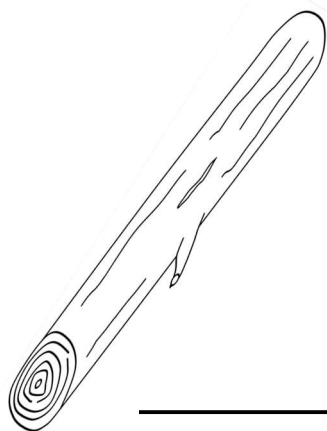
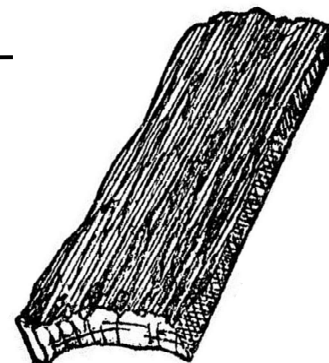
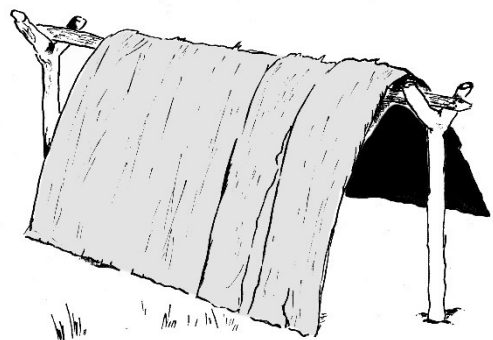
Walu: _____

Wukirri winya'yunawuy yäku mala.

dharpa

näku

lolu



Yäku: _____

Walu: _____

Wukirri winya'yunawuy yäku mala.

lolu

linygun.

wäṅa

Djäma

ṅaku

Ga beṅuryiny walal gondhaṅal _____n mala bala

gäṅal _____lila.

_____ walal ṅunhiyi _____ny dhawar'maraṅal

Yäku: _____

Walu: _____

Yuwalk wo nyäl?

1. Yolŋu walal gan nhina-nhinan wänanur. Yuwalk Nyäl

2. Gulkthurr walal dhumbu'-dhumbuḷ dharpa mala
goŋ-wanŋany ga wanŋany bäythinyawuy. Yuwalk Nyäl

3. Narnŋa yolŋuy walal dhulkuŋal ḍakul. Yuwalk Nyäl

4. Gondhanal walal ṅäkun mala bala gänal wänalila. Yuwalk Nyäl

5. Bala walal dhathar'yurra balan yuṭalila wänalil. Yuwalk Nyäl

Ga nhä wiripu? Nhuma dhu bulu
dhäwu lakaram nhumalanŋuwuy
nhuma, yuwalk wo nyäl dhäwu!

Dhunupany wanha yäku, mala-djarryurnydja nhepin.

1. Yolthu walal lolu djäma

- wunḡandhu mala
- yolḡu'-yulḡuy mala
- weḡiy' mala
- djamarrkuliy' mala

2. Wanhal walal gulkthurr dharpa mala?

- wukirriḡur
- ḡiltjiḡur
- ranjiḡur
- baralaḡur

3. Nhaku walal ḡarḡga djäma?

- marrḡuw
- weḡiw'
- bäpiw
- dharpaw

4. Nhaliy walal lolu djäma?

- man'tjarryu
- dharpay
- djimukuy
- rakiy'

5. Yolku ḡunhi warraw'?

- wunḡanygu
- yolḡu'yulḡuw
- detuḡ
- gu
- weḡiw'

Yäku: _____

Walu: _____

Liw'maraṅ baḍatjtjunawuy yäku mala (6)

bala walla narṅgan mala yaw'yurr ṅurikiyin dharpa nha mäla

Wukirri dhunupa yäku mala:

Maṅ'maraṅ djäma nhuṅu Page 4-ṅur djorra'ṅur.