

Wanhawal Dharrwa Yolngu ga Marrtji?

42

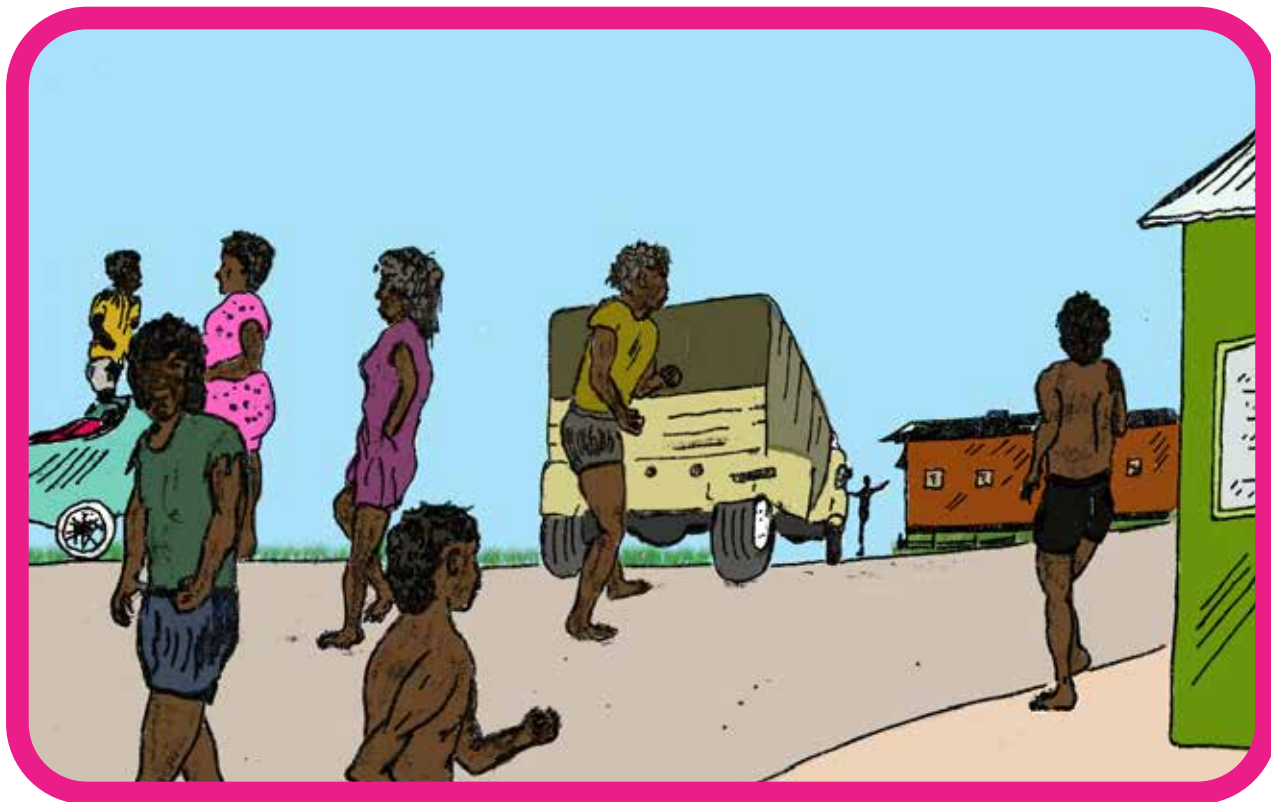


LEVEL 14 – KEY WORDS

wanhawal

Wanhawal Dharrwa Yolŋu ga Marrtji?





Wanhawal dharrwa
yolŋu ga marrtji?



Bäpa ga marrtji
marthanayyu bala
narirri'lil.



Yapa ga marrtji bala
ranjilil maypalwu.



Yothu ga marrtji bala
wänjalil nathaw.



Djamarrkuli' ga marrtji
bala diltjilil gukuw.

Wanhawal Dharrwa Yolŋu ga Marrtji?

Where are all the People Going?

3. Wanhawal dharrwa yolŋu ga marrtji?
Where are all the people going?
5. Bäpa ga marrtji marthanayyu bala ŋarirri'lil.
Father is going by boat to fish.
7. Yapa ga marrtji bala ranjilil maypalwu.
Sister is going to the beach for shellfish.

9. Yothu ga marrtji bala wänjalil ñathaw.
The child is going home for food.
11. Djamarrkuli' ga marrtji bala ðiltjilil gukuw.
The children are going to the bush for honey.



Shepherdson College

YM Levelled Reading Program - Teacher Guide 14

42. Wanhawal Dharrwa Yolngu ga Marrtji? - Where are all the People Going?

Language: Djambarrpuyngu

Written by Betty Marrnganyin'

Illustrated by Jeffrey Ranhdhakpuy. Recoloured by Fred Munyirinyir

First published in 1978. Reprinted 2020

All rights reserved. No part of this publication may be reproduced, stored in a retrieval system, or transmitted in any form or by any means, electronic, mechanical, photocopy, recording or otherwise without the written permission of the publisher.

Published by Shepherdson College, Literature Production Centre.
Galiwin'ku, Elcho Island, NT, Australia

Shepherdson College, PMB 74, Winnellie, NT 0822
lpc.elcho.org