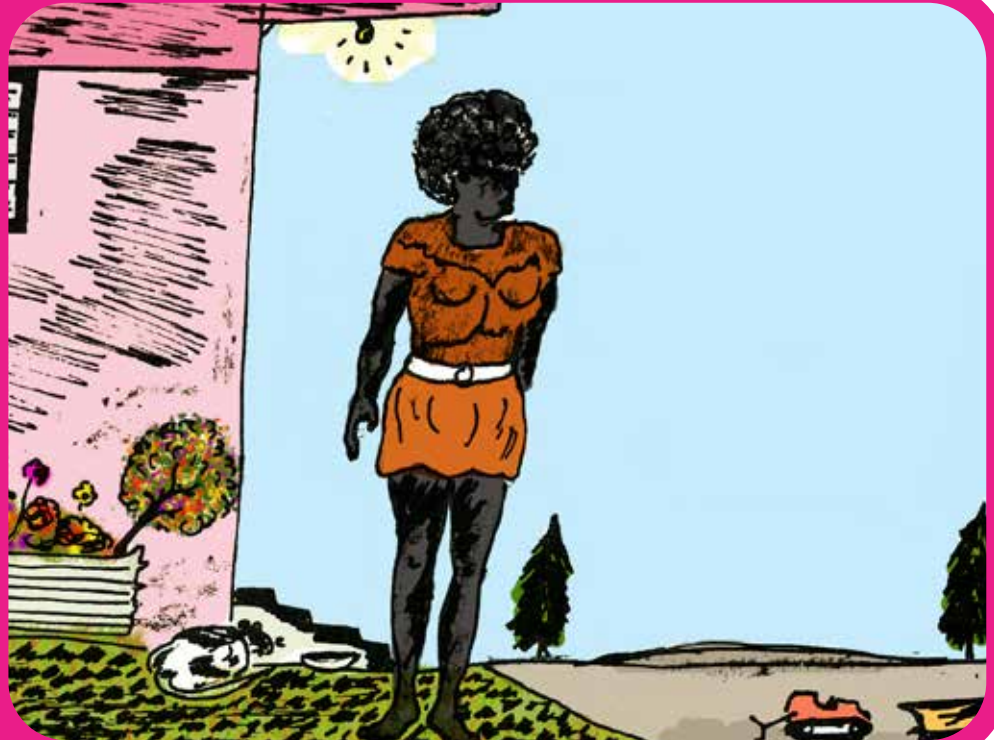


# Wanha?

40



## LEVEL 14 – KEY WORDS

yothu

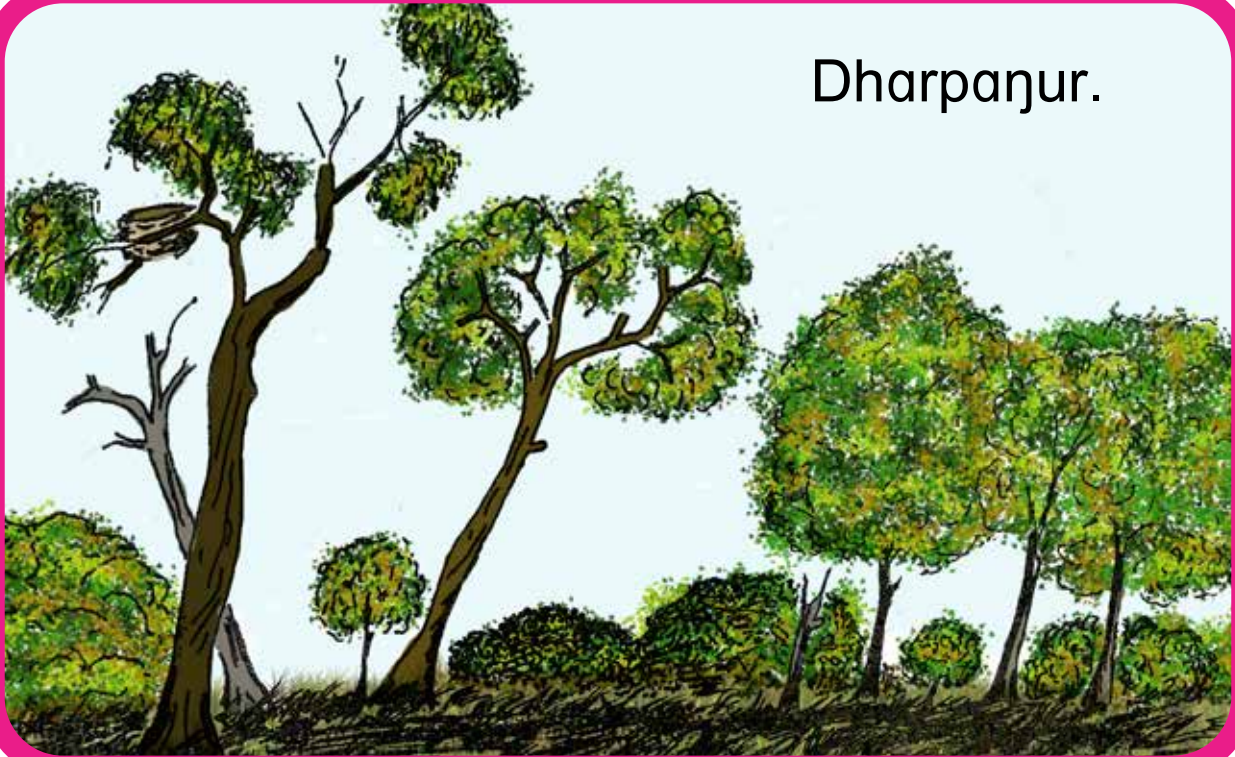
# Wanha?



Wanha ɲarraku wäŋa?

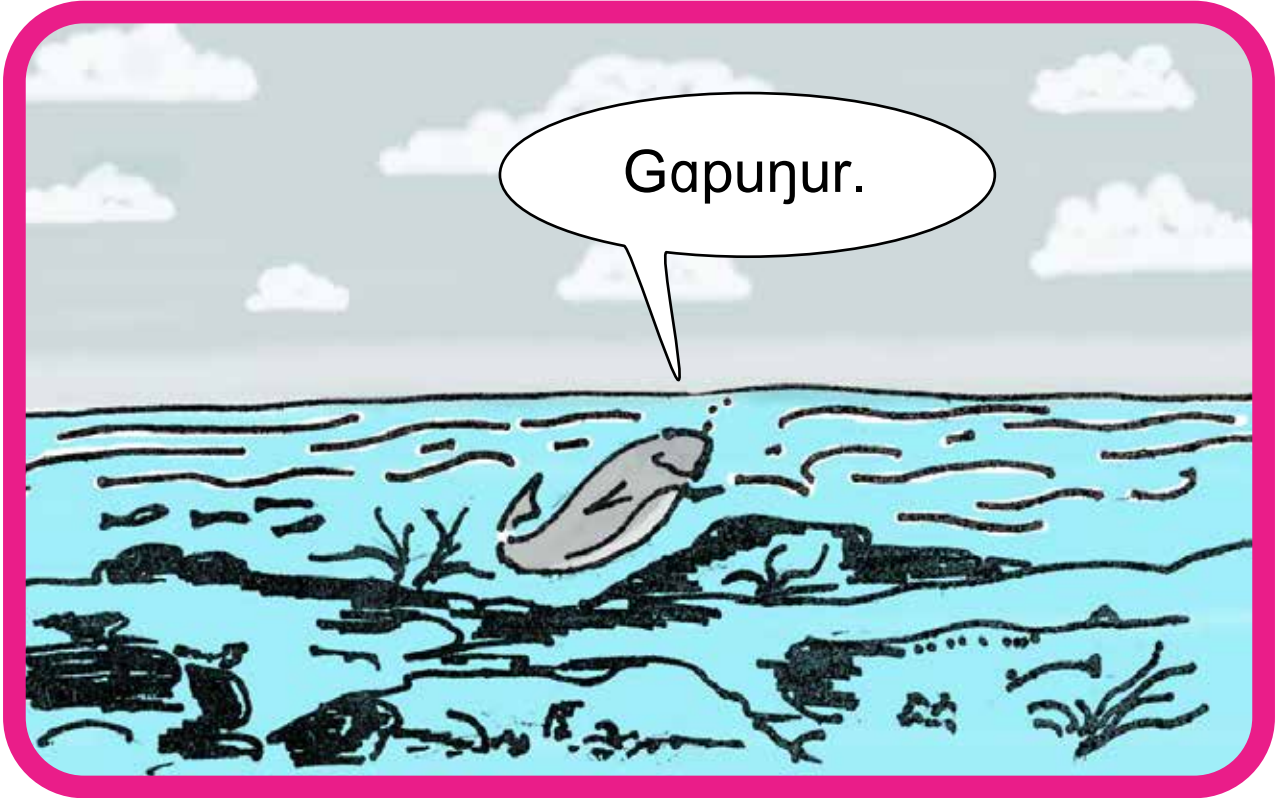


Dharpanjur.



Njarirri', wanha nhe?





Dharrwa djamarrku<sub>li</sub>' wanha?



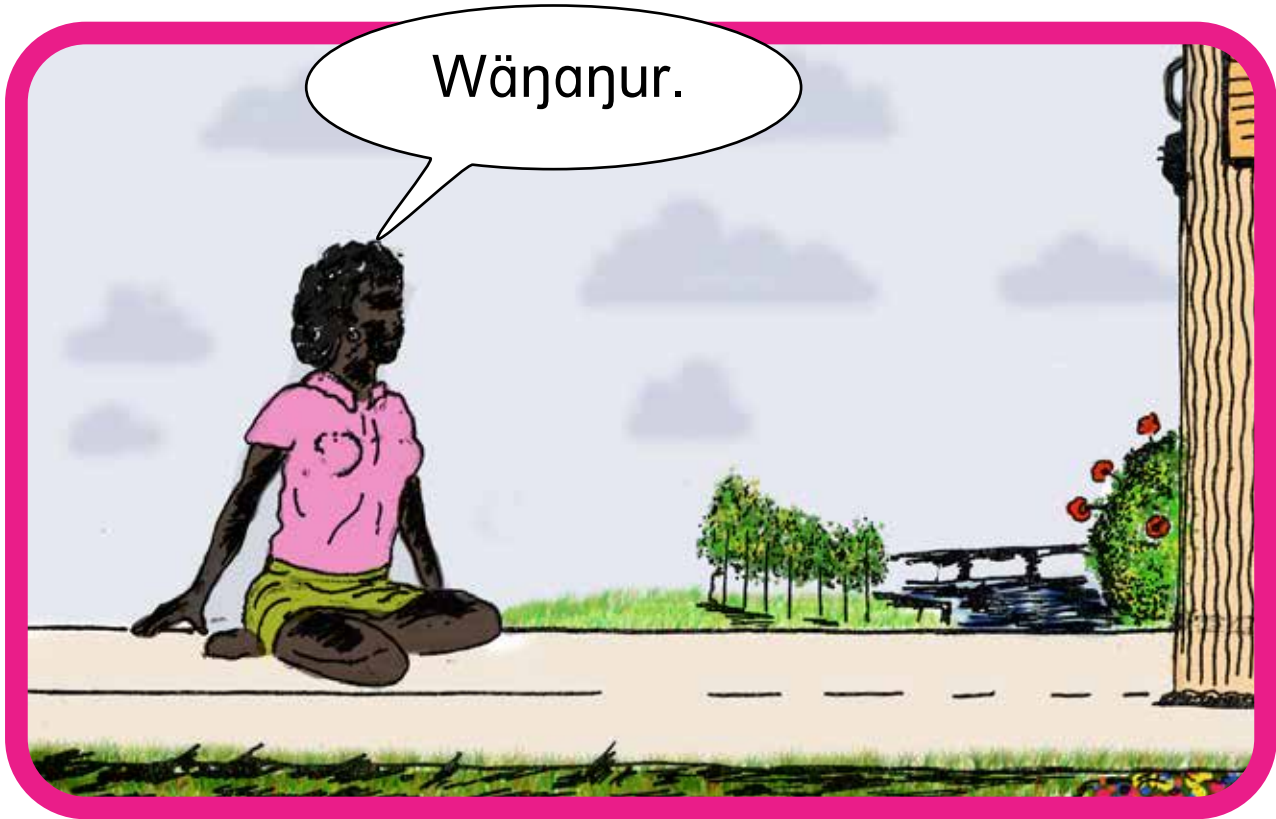


Ranjur.



Yapa, wanha nhe?





Weti', wanha nhe?

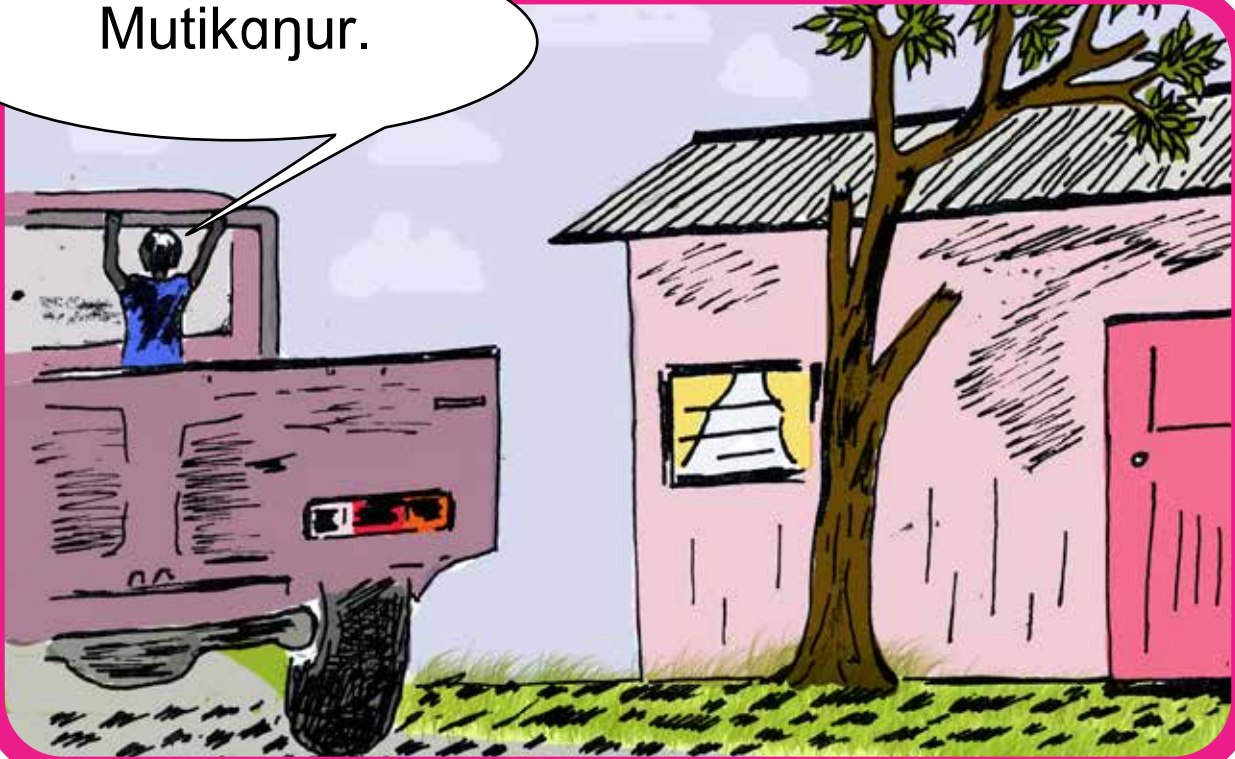


Diltjinur.





Mutikanjur.



# Wanha?

## *Where?*

---

2. Wanha ṅarraku wāṅa?  
*Where is my home?*
3. Dharpaṅur.  
*In the tree.*
4. Ṇarirri', wanha nhe?  
*Fish, where are you?*
5. Gapuṅur.  
*In the water.*
6. Dharrwa djamarrkuli' wanha?  
*Where are lots of children?*
7. Raṅiṅur.  
*At the beach.*



8. Yapa, wanha nhe?  
*Sister, where are you?*
9. Wäṇaṇur.  
*At home.*
10. Weṭi', wanha nhe?  
*Wallaby, where are you?*
11. Ḍiltjiṇur.  
*In the bush.*
12. Yothu ṇarraku wanha?  
*Where's my baby?*
13. Mutikaṇur.  
*In the car.*







# Shepherdson College

YM Levelled Reading Program - Teacher Guide 14

40. Wanha? - Where?

Language: Djambarrpuyŋu

Written by Betty Marrŋanyin'

Illustrated by Jeffrey Ranhdhakpuy. Recoloured by Fred Munyirinyir

First published in 1978. Reprinted 2020

All rights reserved. No part of this publication may be reproduced, stored in a retrieval system, or transmitted in any form or by any means, electronic, mechanical, photocopy, recording or otherwise without the written permission of the publisher.

Published by Shepherdson College, Literature Production Centre.  
Galiwin'ku, Elcho Island, NT, Australia

Shepherdson College, PMB 74, Winnellie, NT 0822  
[lpc.elcho.org](http://lpc.elcho.org)