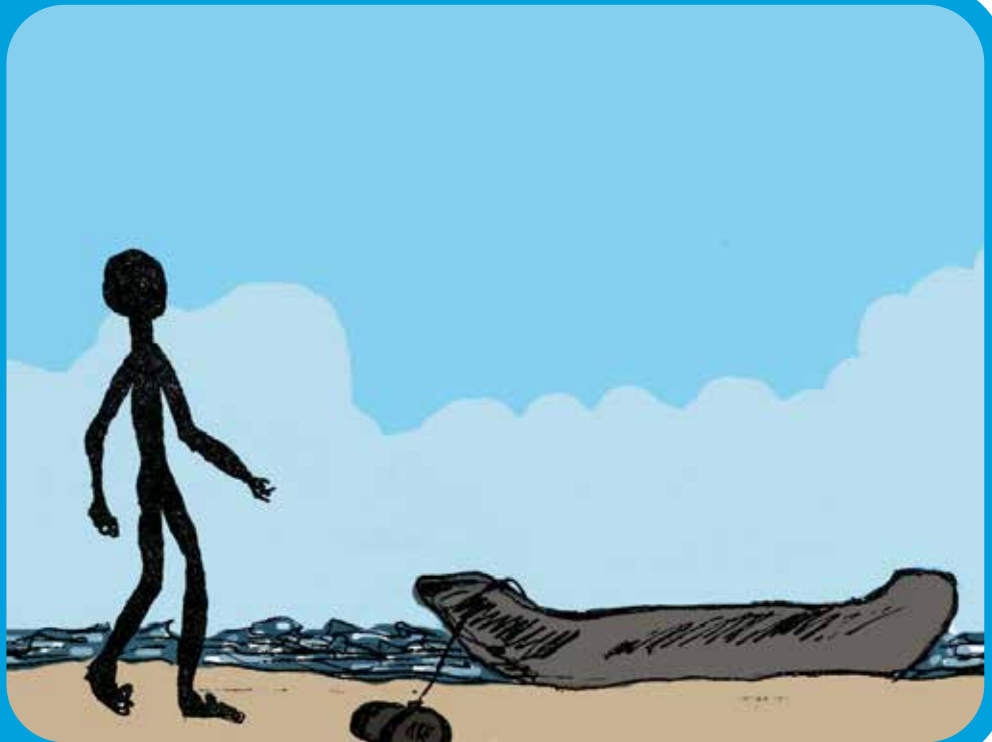


# Yol?

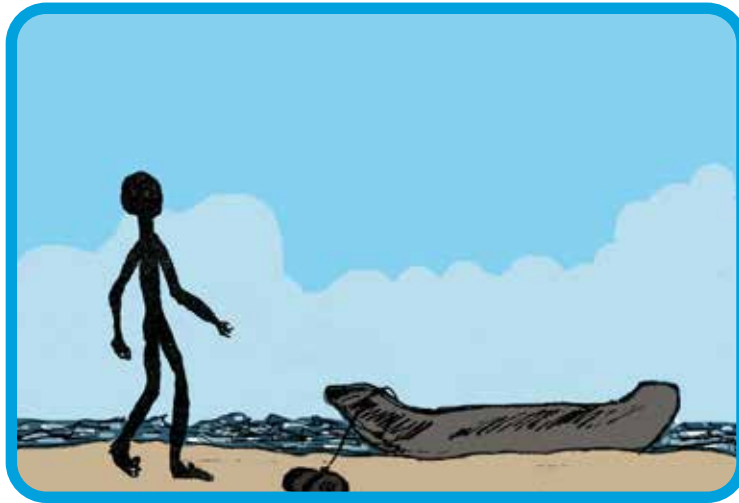
# 35



## LEVEL 13 – KEY WORDS

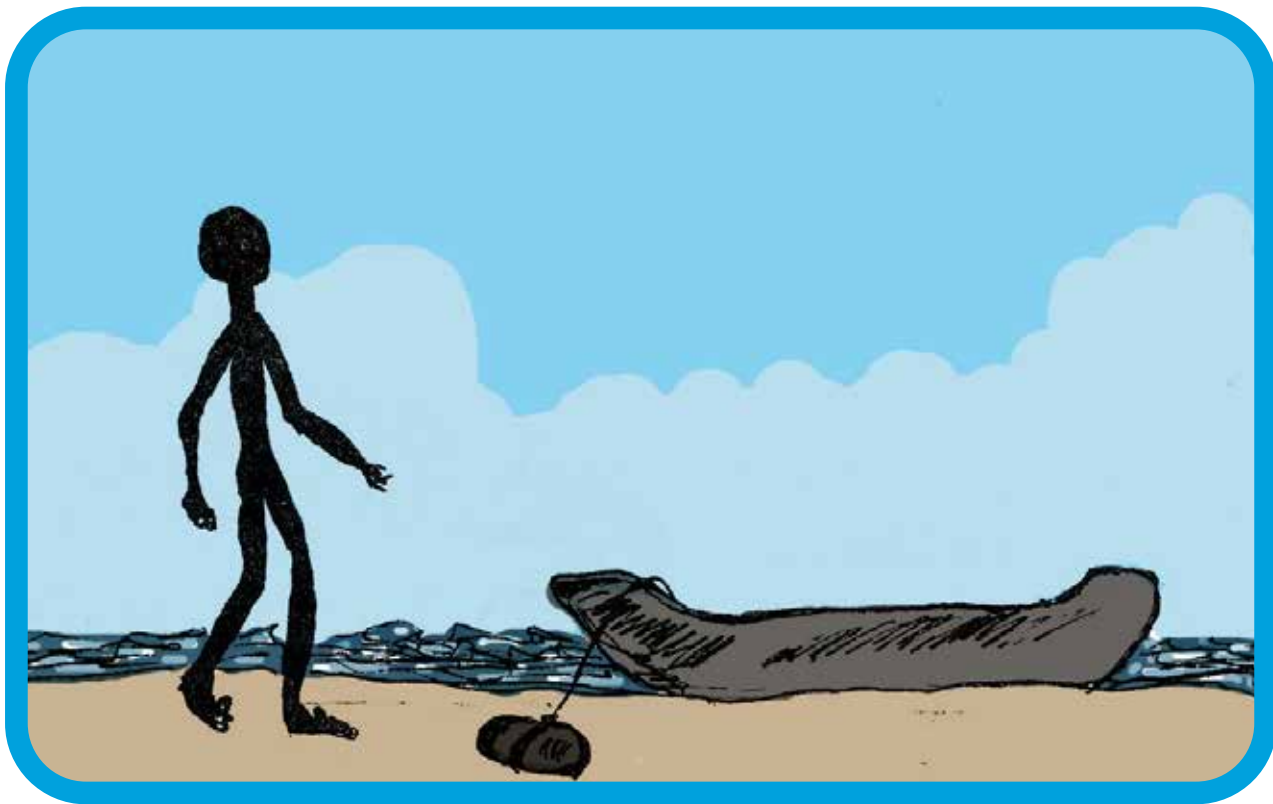
yol

# Yol?

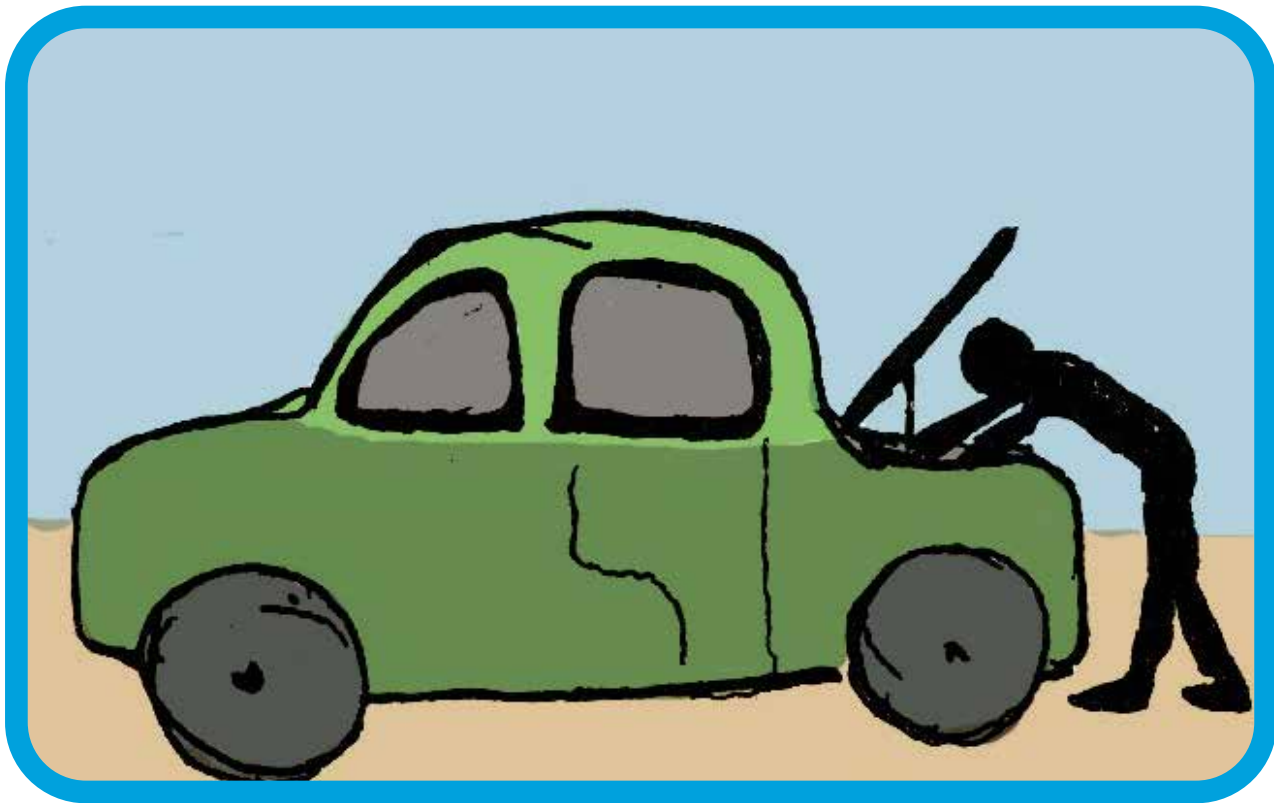




Yol yolŋu ga nhina wänŋaŋur?  
Yolŋu walal barpuru ga nhina  
wänŋaŋur, nyan'thun walal ga  
ŋarirri'.



Yol marrtji marthanaylil?  
Nathi barpuru marrtji  
marthanaylil.





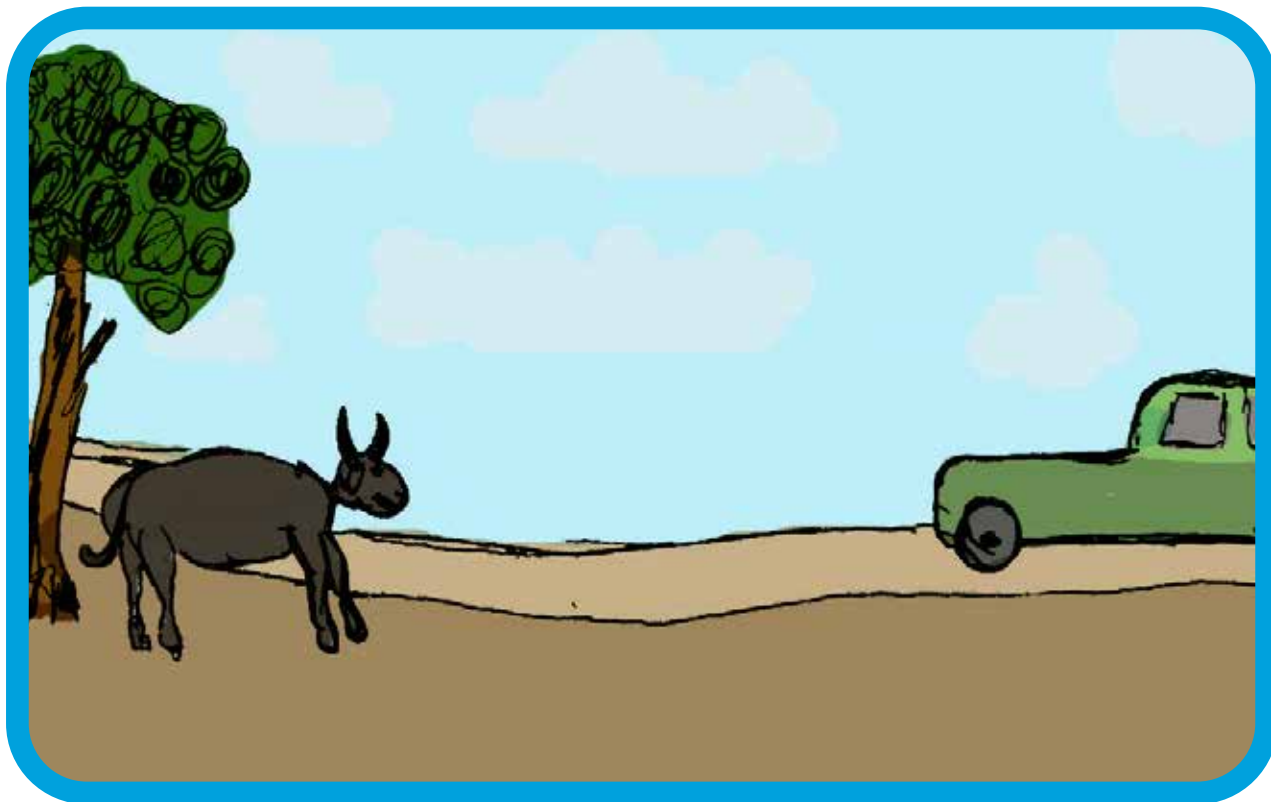
Yolthu djäma mutika?  
Bäpay ga djäma  
mutika.



Yol ga dhärra gungaṇur?  
Yapa ga dhärra gungaṇur,  
nhäma ṇayi ga weti'  
gungalil.



Yol ga ηorra? Manda  
barpuru ga ηorra  
galkun wäηaηur.



Yol ga dhärra dharpaṇur?  
Detuṇ barpuru ga dhärra  
dharpaṇur, nhäma  
ṇayi ga walalaṇ mutika.

# Yol?

## Who?

---

3. Yol yolŋu ga nhina wäŋaŋur? Yolŋu walal barpuru ga nhina wäŋaŋur, nyan'thun walal ga ŋarirri'.  
*Who are those people staying at home? Yesterday some people were sitting at home eating fish.*
5. Yol marrtji marthanaylil? Nathi barpuru marrtji marthanaylil.  
*Who was walking to the boat? Yesterday grandfather was walking to the boat.*
7. Yolthu djäma mutika? Bäpay ga djäma mutika.  
*Who is working on the car? Father is working on the car.*



9. Yol ga dhär<sub>ra</sub> gungaṇur? Yapa ga dhär<sub>ra</sub> gungaṇur, nhäma ṇayi ga weṭi' gungalil.  
*Who is standing by the pandanus? Sister is standing by the pandanus, looking at the wallaby coming to the pandanus.*
11. Yol ga ṇorra? Maṇḁa barpuru ga ṇorra galkun wäṇaṇur.  
*Who is sleeping? Yesterday those two were sleeping waiting at home.*
13. Yol ga dhär<sub>ra</sub> dharpaṇur? Detuṇ barpuru ga dhär<sub>ra</sub> dharpaṇur, nhäma ṇayi ga walalaṇ mutika.  
*Who is standing by the tree? Yesterday a buffalo was standing by the tree, looking at those people's car.*







# Shepherdson College

YM Levelled Reading Program - Teacher Guide 13

35. Yol? - Who?

Language: Djambarrpuyŋu

Written by Betty Marrŋanyin'

Illustrations by Jeffrey Lunjarriny. Recoloured by Fred Munyirinyir

First published in 1978. Reprinted 2020

All rights reserved. No part of this publication may be reproduced, stored in a retrieval system, or transmitted in any form or by any means, electronic, mechanical, photocopy, recording or otherwise without the written permission of the publisher.

Published by Shepherdson College, Literature Production Centre.  
Galiwin'ku, Elcho Island, NT, Australia

Shepherdson College, PMB 74, Winnellie, NT 0822  
[lpc.elcho.org](http://lpc.elcho.org)