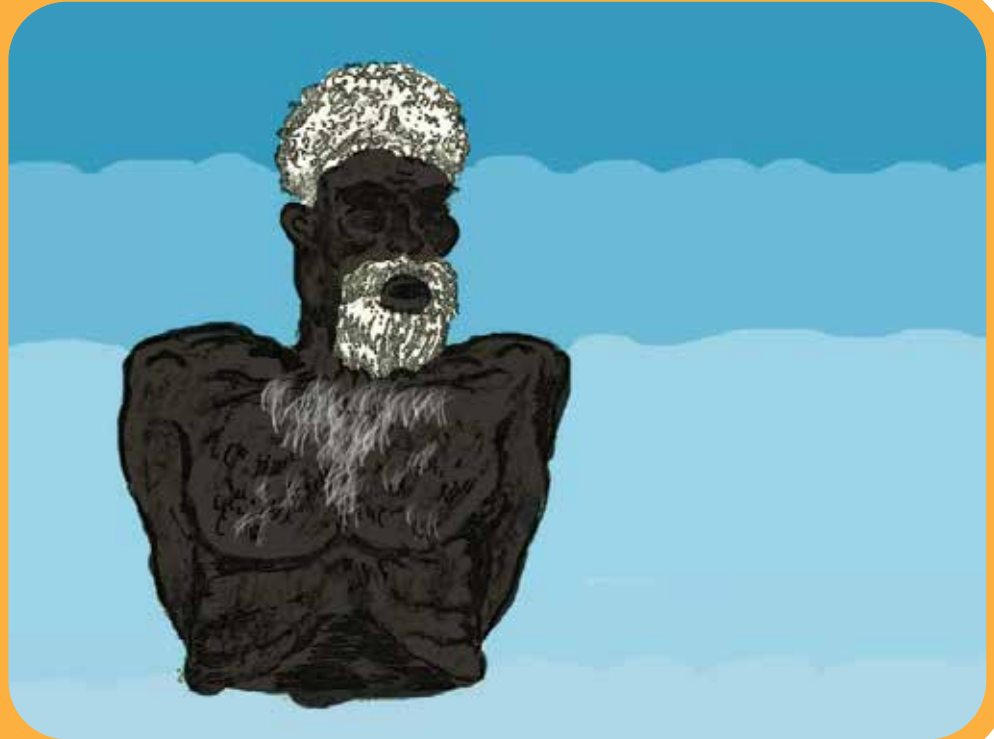


Nathi

32

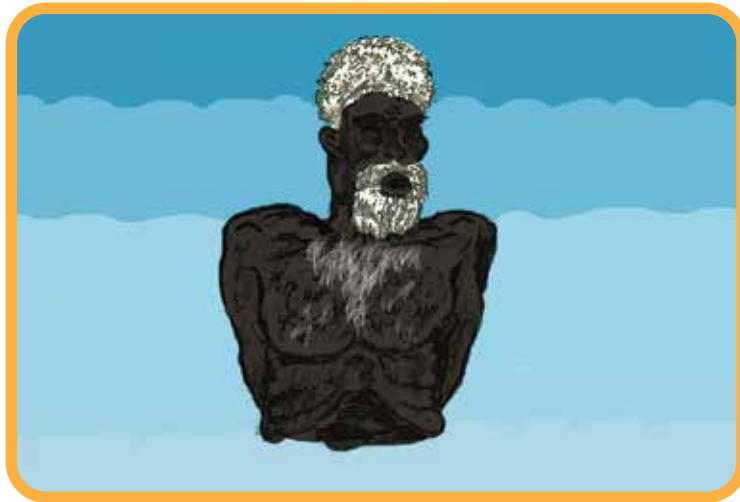


LEVEL 12 – KEY WORDS

luku

nyan'thun

Nathi





Nathi barpuru marrtji
lukuy bala diltjilil.



Ga ṅayi barpuru bāpa
marrtji mutikay walal
djamarrkuli'.



Bala walal barpuru ga nhina
diltjinur, ga nyan'thun walal
barpuru guku ga räkay.



Ga ɲathiy barpuru buma
weti'.



Ga bäpay barpuru gäma
weti' bala mutikalil.



Walal barpuru wandirr
wäŋalil mutikay.

N̄athi

Grandfather

3. N̄athi barpuru marrtji lukuy bala diltjilil.
Yesterday grandfather walked to the bush.
5. Ga ṅayi barpuru bāpa marrtji mutikay walal djamarrkuli'.
Father and the children went by car.
7. Bala walal barpuru ga nhina diltjin̄ur, ga nyan̄'thun walal barpuru guku ga rākay.
Then they stayed in the bush eating honey and water chestnuts.

9. Ga ɲathiy barpuru buma weṯi'.
And grandfather killed a wallaby.
11. Ga bäpay barpuru gäma weṯi' bala mutikalil.
And father carried the wallaby over to the car.
13. Walal barpuru waṇḍirr wäṇalil mutikay.
They travelled home by car.



Shepherdson College

YM Levelled Reading Program - Teacher Guide 12

32. Nathi - Grandfather (Mother's Father)

Language: Djambarrpuyŋu

Written by Betty Marrŋanyin'.

Illustrated by Jeffrey Ranhdhakpuy. Coloured by Fred Munyirinyir

First published in 1980. Reprinted 2020

All rights reserved. No part of this publication may be reproduced, stored in a retrieval system, or transmitted in any form or by any means, electronic, mechanical, photocopy, recording or otherwise without the written permission of the publisher.

Published by Shepherdson College, Literature Production Centre.
Galiwin'ku, Elcho Island, NT, Australia

Shepherdson College, PMB 74, Winnellie, NT 0822
lpc.elcho.org