

Goanna Planner Prediction Resources to introduce **Gulaka'puy Dhäwu**

Lesson 1: Introduce the new book and activate prior knowledge.

Before reading (don't read or show the book yet!)

1. Chart 1: (or butcher's paper) Get the students interest – show a real item if you can, or a photo, picture. Ask students what they already know about _____ (fill in inner circle, can write students names next to their comments if you want assessment record)
2. Chart 2: As a whole group on A3, make dot to dot connections to expand students' ideas – pass around the circle, each student draws one line and says a sentence about what they predict.
3. Chart 3: Use pictures from the book to prompt discussion and prediction (glue onto chart for wall display): yäku?, wanhal?, yol?, nhaltjan?
4. Optional: Start lists of words with pictures: yäku?, nhäthinya?, yol?, djämamirriyam? etc

Lesson 2: Read the book for the first time.

1. Review chart 3 (yäku?, wanhal?, yol?, nhaltjan?) to remember the story ideas, then
2. Read the book
3. Check Chart 2 (dot to dot connections): was each connection yuwalk or nyäl (true or false)?
4. Add extra words to Chart 1 to build on prior knowledge.
5. Add some new words from the book to the word lists (yäku?, nhäthinya?, yol?, djämamirriyam?)
6. Children can go to their desks and complete individual A4 dot to dot connection pages – draw lines and attempt to write some words from the charts now on display; colour in.

Chart 1: Before and after web: Activating prior knowledge

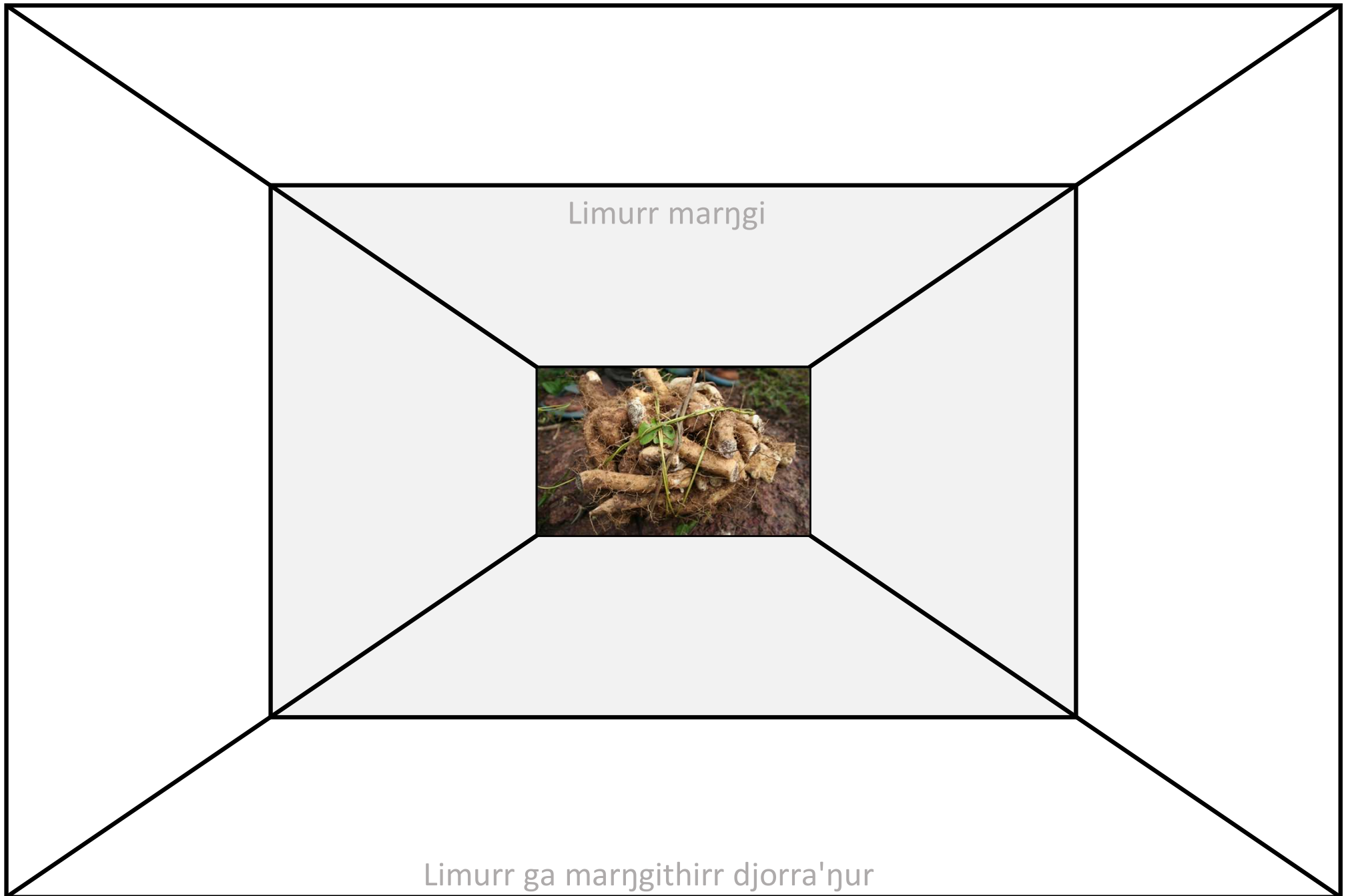


Image to support Chart 1



Yäku: _____

Walu: ____ / ____ / ____

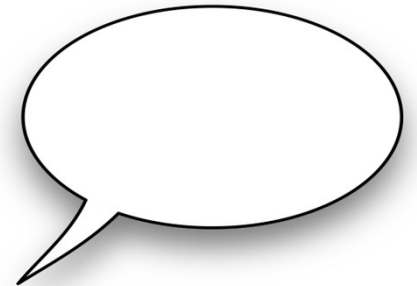
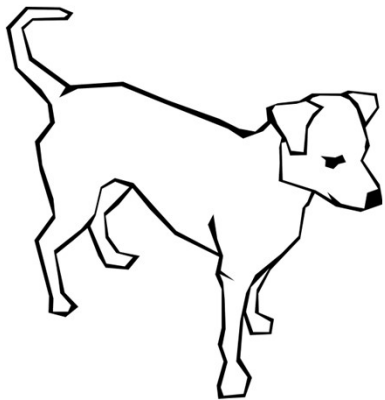
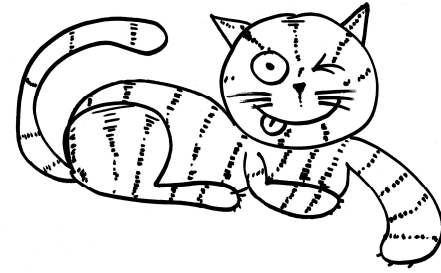
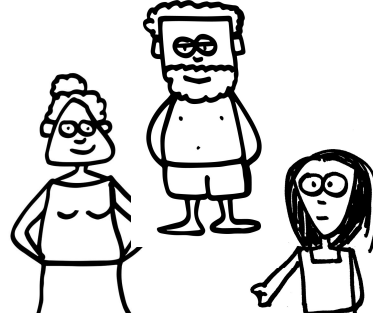


Chart 2: Dot to Dot connections. Making predictions before reading **Gulaka'puy Dhäwu**: draw lines to predict what might go together in this story. Say sentences out loud to the group.

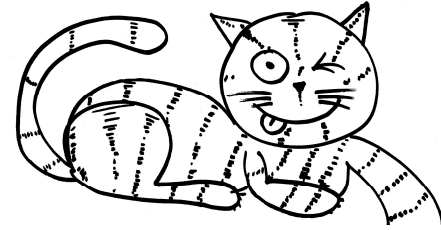
Teacher cheat sheet – to assist with prompting – however all student predictions are good – no wrong answer so encourage all predictions!



Ganguri – bush yams. The characters find and dig out a big one in the bush, it is later cooked on the coals.



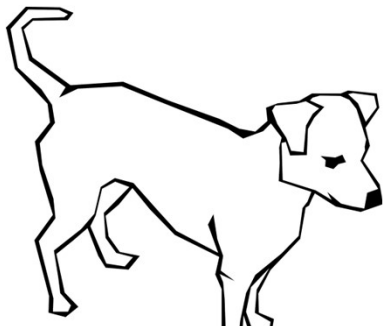
Worruru miyalk – old woman; djawulpa – old man; yothu miyalk – little girl. Characters in the story. The old lady find and digs for the yam; the others help her to pull it up. They call out to each other.



Butjikit – cat. One of the characters who helps the family pull up the yam.



Diltji – bush / retja – jungle / gumurr-retja – edge of the jungle. Where the yams are found.



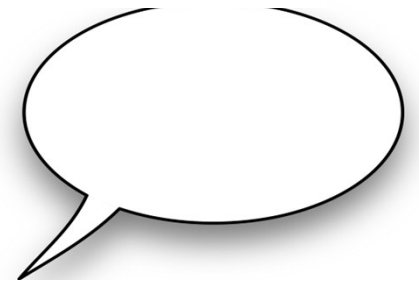
Watū – dog. One of the characters who helps the family pull up the yam.



Dhona' – digging stick. Used to dig up the yam.



Gurtha – fire / Lirgi' – coals. The yam is cooked in the coals.



Wajanhamirr dharapul – talking bubble. The characters call out to each other to help.

Chart 3: Match pictures from the book to the correct box, display on the classroom wall

<div>Yäku (book title)</div>	<div>Wanhal (setting)</div>
<div>Yol (characters)</div>	<div>Nhaltjan (plot)</div>

Cut these out before the lesson and present to the students in mixed order, to glue into the correct box of Chart 3.

